



DEDICATED TO SPORTS
GÖTEBORG



PROPOSAL TO HOST THE IBSA WORLD GAMES IN GÖTEBORG, SWEDEN 29 JULY - 7 AUGUST 2011



CONTENTS

LETTERS OF INVITATION

1. SWEDISH SPORTS ORGANISATION FOR THE DISABLED..... 4 AND SWEDISH PARALYMPIC COMMITTEE	4
2. DEDICATED TO SPORTS..... 6	6
3. GÖTEBORG - EVENT CITY EXTRA ORDINAIRE.....8 - Advantage Göteborg - The City of Göteborg - The Event City - Value for Money	8
4. EVENTS AND COMPETITION VENUES.....13 - Just around the corner - Judo - Goalball - Shooting and Showdown - Athletics - Football, B1 and B2 - Swimming	13
5. ACCOMODATION.....21 - Hotel situation	21
6. TRANSPORTATION.....24 - Travel to Göteborg - Travel within Göteborg	24
7. CULTURE AND SOCIAL ACTIVITIES.....30 - Venues, Opening Ceremony - Audio Description - Sights, culture and attractions	30
8. APPENDICES AND IBSA APPLICATION FORM.....35 - Organization for the IBSA World Games 2011 - Local Organization Committee for the IBSA World Games 2011 - Sweden - Facts about Sweden - IBSA Application Form	35

LETTERS OF INVITATION



Picture: The full-scale replica of the 18th century East Indiaman Götheborg III leaves Göteborg's harbour for its travels around the world, autumn 2005.



1. SWEDISH SPORTS ORGANIZATION FOR THE DISABLED AND SWEDISH PARALYMPIC COMMITTEE



ABOUT SHIF

The Swedish Sports Organization for the Disabled and Swedish Paralympic Committee (SHIF) organizes sports for physically and visually impaired athletes and athletes with learning disabilities in 17 different sports.

SHIF was founded in 1969 and became a member of the National Swedish Sports Association the same year. With 450 local Sports Associations, SHIF has about 40.000 members.

SHIF organizes 17 different sports for athletes with different disabilities and cooperates with 12 other national Sports Organisations organising sport for athletes with disabilities in different sports that are fully integrated into their activities.

As the National Paralympic Committee for Sweden, SHIF also is responsible for Sweden's Paralympic movement, including the eight sports that are integrated into other national Sports Organisations.

Website: www.handikappidrott.se





2. DEDICATED TO SPORTS



ABOUT DEDICATED TO SPORTS

The city of Göteborg has made a long-term commitment to host and develop sporting events for athletes with disabilities. Project manager for the commitment is David Lega, former Paralympian and triple World Champion in swimming.

Göteborg is Sweden's second largest city, located on the west coast. With the Atlantic Ocean in front and with Scandinavia's biggest harbor, Göteborg has always been Sweden's gateway to the world. During recent years, Göteborg has hosted a number of great sporting events. Worth mentioning are World and European championships in athletics, European championships in football and numerous championships in sailing. Every summer Göteborg hosts the world's biggest youth tournaments in handball and in soccer, Partille Cup and Gothia Cup.

Göteborg has both the experience and the facilities to manage great events. The recipe for success during the years is the fact that arenas and hotels are located close to each other in the city centre. The concept of proximity is very well received by everyone and makes the games easy accessible, friendly and welcoming by both participants and inhabitants. Everything is just around the corner.

The enthusiasm of both authorities and the people of Göteborg is perhaps the one thing that makes the events here so unique and successful. Hosting great sporting events is about so much more than sports. The compact vibrant city and the enthusiasm and generosity of our inhabitants make participants leave the events with great memories and positive feelings.

The city of Göteborg's engagement for sporting events for athletes with disabilities is a long term commitment.

As stated by Göteborg & Co and David Lega:

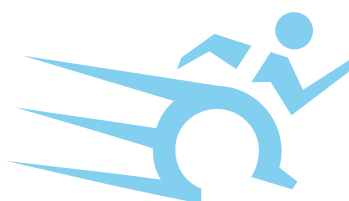
"We know our abilities and our professional skills.

We are experienced and we have all the necessary facilities.

We will bring this type of events to a higher level.

For the benefit of the sport, the participants, athletes with disabilities all over the world and for the people of Göteborg.

We are dedicated to sports."



DEDICATED TO SPORTS

GÖTEBORG



3. GÖTEBORG - EVENT CITY EXTRA ORDINAIRE



ADVANTAGE GÖTEBORG

All the Pieces You Need for a Successful Event

Everything within walking distance

Strong joint commitment between authorities and the business community to support major events



61,000 students at two universities

Gastronomic Gem



English is widely spoken



By the sea



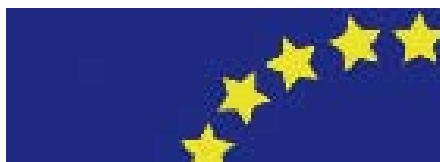
Scandinavia's most important city for trade and industry

Clean, green, safe and friendly city



850,000 inhabitants

Easily accessible



Sweden is a member of the European Union



Great organisational skills

Centrally located arenas



Prices below European average

Leading European event venue



7,500 city centered hotel rooms

THE CITY OF GÖTEBORG

GÖTEBORG - STRATEGICALLY LOCATED IN A BEAUTIFUL REGION

Göteborg, Sweden's second largest city, is situated in the heart of Scandinavia, between the Swedish, Danish and Norwegian capitals. The strategic location makes Göteborg a true gateway to Scandinavia.

Göteborg is a buzzing city hosting major international championships, events, meetings and concerts. First-class facilities, a large selection of hotels, Michelin star restaurants, a wealth of entertainment and attractive shops, Göteborg has everything that a large city needs, all within convenient walking distance. The pleasant atmosphere and the broad variety make Göteborg one of Europe's leading event cities.

THE FRIENDLY CITY

Sweden enjoys a stable political, economic and social environment. Göteborg is a friendly city with an open and hospitable atmosphere. Crime statistics are low. Experiences of large international events have given the police the know-how required to work professionally with security issues. Environmental thinking is a key concept for local authorities, trade and industry in order to keep the archipelago unspoilt and to ensure the region remains one of the most popular summer resorts in the country. Adding to the feeling of security is also the fact that the general population speaks English, so visitors can rely on being understood in most situations.

An event in Göteborg enjoys high visibility. Since the city centre is compact and the arenas are located close by hotels, restaurants and shops, the majority of the athletes stay within a relatively small area of the city. This also means that the event is extended to the city in a pleasant way and the athletes meet spontaneously and naturally in the streets at restaurants and cafés.

DECISION MAKING SHORT-CUTS

Göteborg has extensive experience of organising major events and meetings. Politicians, the business community and universities have a unique interplay and share the same visions. This makes planning large championships and tournaments smooth and efficient for everyone involved. Due to this strong mutual commitment and well-developed cooperation between the local event industry, universities and the City Council to support major events, the number of large events hosted in Göteborg is unique for a city of Göteborgs size. This spirit of cooperation is widely known as "the spirit of Göteborg". You can always rest assured that the whole city listens to, and acts on, what you have to say.



THE EVENT CITY

INFRASTRUCTURE JUST CUT OUT FOR EVENTS

The arenas are all located in the city centre. Walking distance to around 6,000 hotel rooms, all categories. 1,300 beds are available in budget category, such as youth hostels, students' halls of residence, apartments and holiday villages. By international comparison, Swedish budget accommodation standards are high.

Social venues in green surroundings or waterfront locations, yet still in the heart of the city. Extensive and reliable public transportation system with trams, buses and boats.

HIGH VISIBILITY

Thanks to the city centre's compact layout, events enjoy high visibility. It also makes it easier for athletes to interact, not only at the arena, but in the streets, cafés and restaurants.

NATURAL BEAUTY

Open sea and stunning archipelago or deep forests and pristine countryside. For discovery or recovery, only a tram ride away.

TIME SAVINGS

Athletes can walk between arenas, hotels and social venues. That offers maximum convenience for athletes, sponsors and organisers respectively. No shuttles are needed, that gives organisers cost savings in terms of more efficient events.

A Selection of Past and Upcoming Major Sporting Events in Göteborg

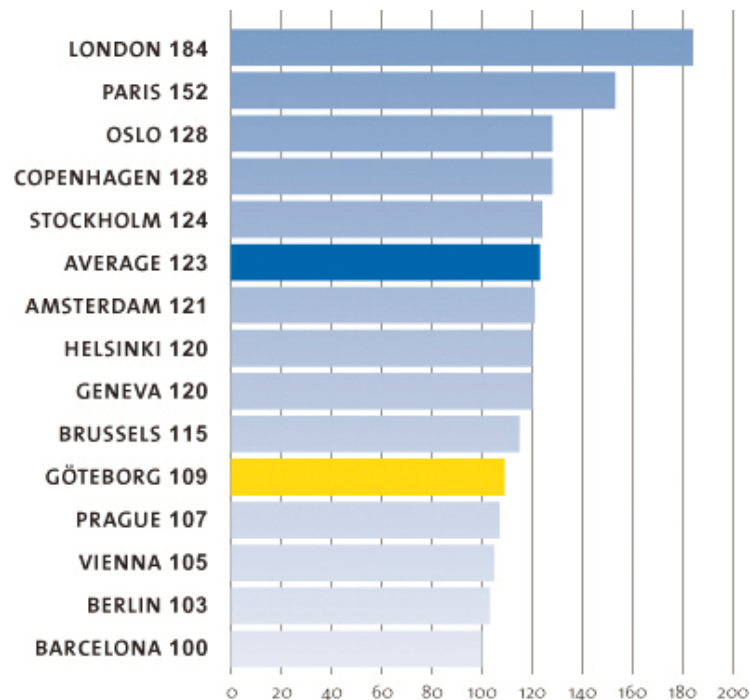
Year	Meeting
1992	The European Football Championships
1995	5 th IAAF World Championships in Athletics
1997	Cutty Sark Tall Ships' Races, World Cup in Match Racing (sailing)
1999	European Championships under 23 in Athletics, The 11 th World Gymnastrada
2002	European Championships in Handball
	World Championships in Ice-hockey
	Volvo Ocean Race
2003	World Championships in Speed Skating
2004	The UEFA Cup Final
2005	European Championships in Chess
2006	European Championships in Athletics
	Volvo Ocean Race
	European Championships in Handball
2008	World Figure Skating Championships
	FEI World Cup Jumping Final
2009	UEFA European Under 21 Championships
Annual	Gothia Cup, football, the world's largest sporting event for the youth with 25,000 participants from 60 countries.
	Partille Cup, handball, the world's largest handball tournament with approx. 15,000 young participants from 40 countries.

VALUE FOR MONEY

PRICE LEVELS

In 2004, the Swedish Tourist Authority commissioned a comparison study of the price level for convention visitors in 14 European cities. The study was conducted and produced by the Metamatrix Development & Consulting AB. The method was based on the collection of prices for a number of goods and services, typical of a convention visitor's consumption, such as hotel, restaurant, transport, shopping and city sightseeing. Results of the study show that Göteborg is 14 per cent below the average index level and only nine per cent above the cheapest city.

Total Price Index - European cities



Source: Metamatrix Development & Consulting AB, 2004





4. EVENTS AND COMPETITION VENUES



JUST AROUND THE CORNER

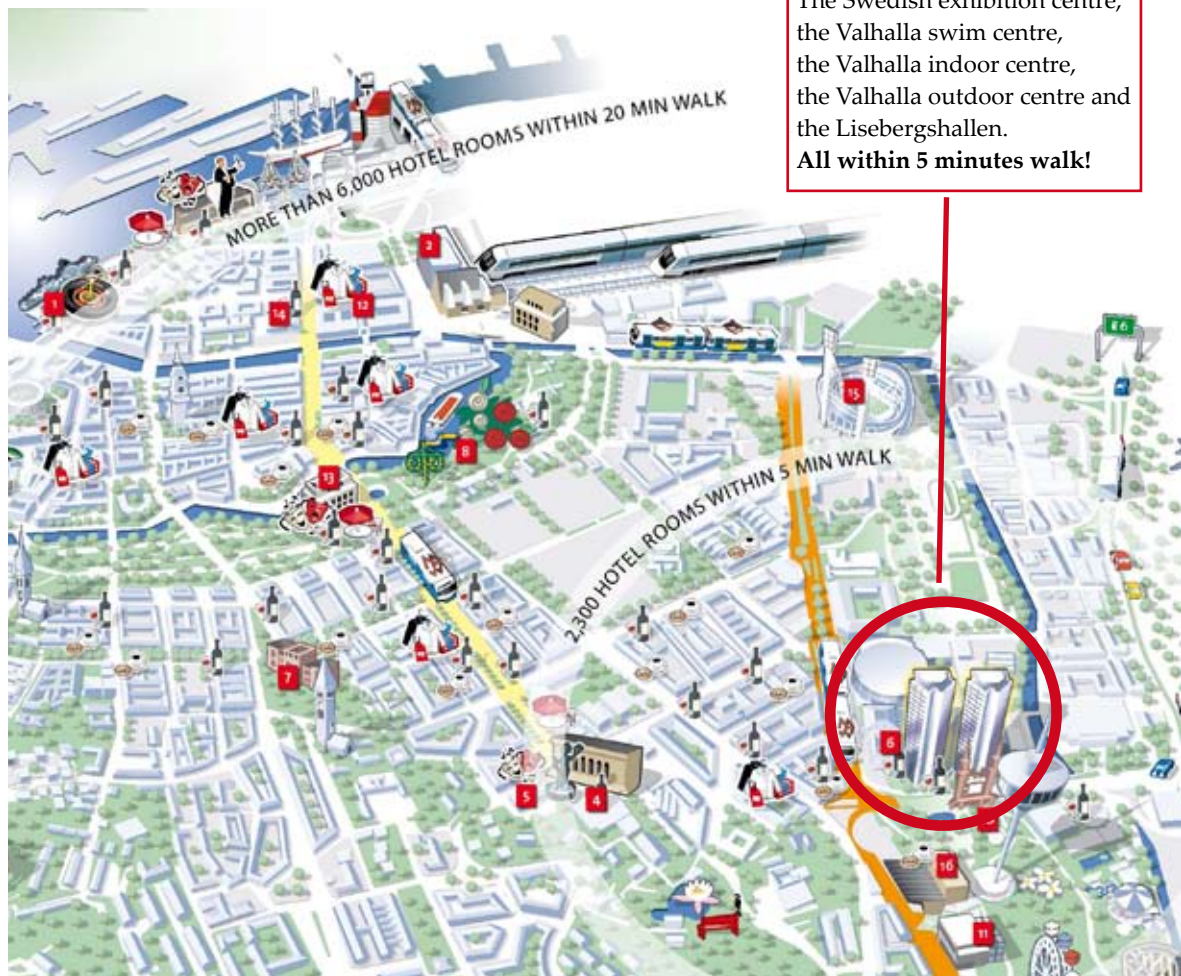
WALKING DISTANCE

In Göteborg almost everything is within walking distance, or only a short tramride away.

Even for an event like the IBSA World Games where many arenas will be used, we have managed to concentrate all the venues to arenas which are all located within 10 minutes walk!

During the games we will use the Swedish exhibition centre as a hub for information and results from the competition. This is really a venue of opportunities. Each year they hold around 30 exhibitions and hundreds of conferences and other events. The Swedish Exhibition Centre is a meeting place for 7,000 exhibitors and around one million visitors from all over the world.

The exhibition centre is located just by the Valhalla swim centre, the Valhalla indoor centre, the Valhalla outdoor centre and the Lisebergshallen. All these venues you find within 5 minutes walk! It is only the Ullevi Stadium that is located within 10 minutes walk from the exhibition centre.



JUDO

THE ARENA - LISEBERGSHALLEN ARENA

Lisebergshallen is one of the most frequently used indoorhalls in Göteborg. It is the homeground for the city's best handball and floorball teams and often hosts national and international tournaments. The arena is also used for dancing contests, concerts, big dinners, parties and exhibitions. For IBSA World Games it will be the arena for judo.

Lisebergshallen is owned and operated by the Liseberg Amusement Park, and the arena is located next to the parks main entrance, right in the city centre.





Foto: Karin Naucler

GOALBALL

THE ARENA - VALHALLA SPORTCENTRE

Valhalla Sportcentre consists of many different arenas. A swimming centre, three indoor halls and a bowling centre.

The halls are used for training and competitions within many different sports as basket ball, handball, judo, volleyball, floorball etc. The centre is also an important facility during major events and it has 12 dressing rooms.

The three indoor halls will be used for goalball during the IBSA World Games.



Foto: Karin Naucler



Foto: Martin Naucler



Foto: Martin Naucler

SHOOTING AND SHOWDOWN

THE ARENA - THE SWEDISH EXHIBITION CENTRE

This is really a venue of opportunities. Each year it hosts around 30 exhibitions and hundreds of conferences and other events. The Swedish Exhibition Centre is a meeting place for 7,000 exhibitors and around one million visitors from all over the world.

For the IBSA World Games it will not only be the centre for competition information and results, but also the venue for shooting and showdown.

The exhibition centre is located just by the Valhalla swim centre, the Valhalla indoor centre, the Valhalla outdoor centre and the Lisebergshallen. All these venues you find within 5 minutes walk!



ATHLETICS

THE ARENA - ULLEVI STADIUM

Ullevi is the largest stadium in Scandinavia. It was opened in 1958, its original use was as a venue for the 1958 World Cup in football. Since then, it has hosted numerous sports events, notably football, athletics, speedway and speed skating. It has an all-seated capacity of 43,000 and a total capacity of 60,000 for concerts.

Ullevi was used for several matches in EURO 92, including the final. It also hosted the 1995 World Championships in Athletics, the UEFA Cup Winners' Cup finals in 1983 and 1990, and the UEFA Cup final in 2004. It is also the host for the opening ceremony and final games in the Gothia Cup, the world's largest soccer tournament. Ullevi was also the venue for the 2006 European Championships in Athletics.

For the IBSA World Games Ullevi will be used for the athletics.



FOOTBALL B1

VALHALLA OUTDOOR CENTRE

The outdoor centre is located 100 metres from the swim centre and the indoor sport centre. Everything is within walking distance!

The outdoor centre is also located just by a parc, which make the venue quiet and perfect for the football B1.



Foto: Karin Naucler



Heden, where B2 will be played.

FOOTBALL B2

THE ARENA - HEDEN

Heden is a great open space in the middle of the city centre. It is the most classic of all sport venues in all of Göteborg. It has four football pitches and an approx. 30 000 sq. metres gravel pitch. The gravel pitch is used for many different kinds of events like football, motor sports, handball and boule.

Every year Heden also hosts circuses, shows, exhibitions and Gothia Cup - the world's largest football tournament.

For the IBSA World Games football B1 will be played at Heden.



SWIMMING

THE ARENA - VALHALLA SPORTCENTRE

As mentioned, the Valhalla Sportcentre also houses a swimming centre called Valhallabadet. It is one of Scandinavia's largest swim centre with more than half a million visitors annually. Valhallabadet has successfully hosted many competitions of various kinds, from national competitions like the Swedish Short Course Championships to the FINA World Short Course Swimming Championships in 1997. Valhallabadet is located right in the city centre, surrounded by hotels, tourist attractions, shops and restaurants.

The swim centre has a 50-metre pool for exercise swimmers, a 25-metre pool for diving, and a Roman bath for relaxation. Apart from the pools, the complex has a sauna, a gym, a hairdresser, a bowling hall and tanning beds. It also offers various kinds of massage or beauty treatments.

The arena will be the venue for the swimming competitions of the IBSA World Games.





5. ACCOMMODATION



ACCOMMODATION

WALKING DISTANCE

The hotel business is currently booming in Göteborg and several new hotels are being built over the next two to three years. In numbers this means that in 2011, more than 8,300 hotel rooms will be available in the city centre. Also worth mentioning is that Swedish hotels generally include breakfast in the room rate. For IBSA World Games all the hotels will be within walking distance from the competition centre.

Hotels and Budget Alternatives

A characteristic feature of Göteborg is the concentrated city area with hotels, restaurants, theatres, museums, parks, recreation areas and shopping all located close to each other. Furthermore, all hotels are easily accessible from the airports and the railway station.

Today, 6,000 hotel rooms are available within walking distance of the Swedish Exhibition centre. **1,300 beds** are available in budget category, such as youth hostels, students' halls of residence, apartments and holiday villages. By international comparison, Swedish budget accommodation standards are high.

For the IBSA World Games 2011 preliminary reservations for 2.200 beds have been made in several hotels surrounding the sports centre.



HOTEL AND BUDGET ACCOMODATION - IN GÖTEBORG CITY CENTRE

Category	No. of Hotels	No. of Hotel rooms
5 - star	2	245
4 - star	21	4558
3 - star	22	1839
2 - star to Budget (Hostels)	19	978
TOTAL:	64	7620

In the proximity of around a 45 minute transport, the Göteborg region can also offer approximately an extra 3,000 rooms.





6. TRANSPORTATION



TRANSPORTATION

TRAVEL TO GÖTEBORG

Göteborg is easily accessible from around the world.

By Air

- Direct flights connecting from approx. 45 European cities.
- Intercontinental flights require only one stop on the way to Göteborg, at a major hub in Europe, such as Amsterdam, Copenhagen, Frankfurt or London.
- 20 minutes by airport bus from the main airport Göteborg-Landvetter Airport, to the city centre and the Göteborg Convention Centre.
- Göteborg-Landvetter Airport has a capacity to welcome more than 27,000 arriving passengers per day.
- Low fare airlines serve Göteborg City Airport, 30 minutes by airport bus from the city.



Flight Connections from European Destinations

The chart shows a selection of flight connections to Göteborg. Most of the selected European destinations below have daily direct flights to the city. Göteborg has approx. 45 direct flights to destinations all over Europe. Where direct, non-stop flights are unavailable, only one stop is required at a major hub in Europe such as Amsterdam, Copenhagen, Frankfurt or London. Please note that the list may be subject to change.

From	Non Stop	or one stop via one of the airports below	No. of daily non-stop flights	Travel time (h)
EUROPE				
Aarhus	Yes	CPH	1	0.40
Alicante	Yes	CPH , LHR, STO , FRA	3/w	3.45
Amsterdam	Yes	CPH	6	1.30
Athens	Yes	CPH, AMS, FRA, VIE, PAR, MUC	3/w	5.00
Barcelona	Yes	CPH, LHR, PAR, BRU, AMS, FRA, MUC, VIE, ARN, HEL	1/w	3.00
Belgrade	Yes	VIE, CPH	2/w	3.50
Berlin	Yes	CPH, AMS, FRA, HAM	5/w	1.10
Billund	Yes	CPH	1	1.20
Birmingham	Yes	AMS, BRU, MUC, PAR, CPH	2	1.50
Brussels	Yes	CPH, FRA, LHR, BHX, OSL, AMS	4	1.45
Budapest	Yes	AMS, ZRH, BRU, FRA, VIE, CPH, MUC, OSL	1	2.05
Copenhagen	Yes		8	0.45
Dublin	Yes	CPH, AMS, MAN, BHX, LON, FRA, PAR	1	2.30
Dusseldorf	Yes	FRA, MUC, CPH	3	1.35
Florence	Yes	FRA, MUC, AMS, PAR	3/w	2.25
Frankfurt	Yes	BRU, AMS, CPH, PRG, MUC, OSL, ZRH, DUS	5	1.35
Glasgow	Yes	CPH, LHR, AMS	1	1.50
Graz	Yes	VIE, MUC	4/w	4.10
Hamburg	Yes	CPH	1	1.10
Hannover	Yes	CPH, FRA	1	1.30
Helsinki	Yes	STO	6	2.15
Innsbruck	Yes	VIE	4/w	4.10
London LHR	Yes	CPH, MAN, BRU, AMS, DUS, FRA, OSL, CDG	4	2.15
London STN	Yes		5	2.10
Lyon	Yes	CPH, CDG, FRA, BRU, LHR, AMS	2	2.15
Madrid	Yes	FRA, BRU, MUC, ARN, AMS, CPH, LYS	3/w	3.25
Malaga	Yes	DUS, FRA, OSL, AMS, MUC, PAR, CPH	3/w	4.05
Manchester	Yes	AMS, BRU, MUC, LON, CPH, ARN	2	1.50
Marseille	Yes	CPH, AMS, FRA, MUC, PAR, BRU	2/w	3.05
Moscow		ARN, CPH, OSL, WAW, HEL, PRG, BUD, AMS	10 via	4.00
Munich	Yes	FRA, CPH	4	1.55
Nice	Yes	CPH, PAR, AMS, FRA	2	2.40
Oslo	Yes		5	0.55
Palma de Majorca	Yes	CPH, MUC, HAM, FRA, LON	1/w	4.20
Paris	Yes	AMS, CPH, FRA, MAN, MUC, OSL, ZRH, PRG, ARN, LHR, HAM	4	2.05
Reykjavik	Yes	CPH, OSL, STO, LON, FRA	2/w	4.40
Riga	Yes	CPH, ARL, AMS, FRA, VIE	3/w	2.00

Flight Connections from European Destinations cont.

Rome	Yes	CPH, STO, MIL, FRA, AMS, MUC, PAR, VIE, LON	1	3.45
Stavanger	Yes	OSL, CPH	3/w	1.00
Stockholm	Yes		32	0.55
Tallinn	Yes	STO, HEL, CPH	1	3.00
Vienna	Yes	CPH, FRA	2	2.00
Warsaw	Yes	CPH, ARN, PRG, CPH, OSL, HAM	3/w	1.40
Zagreb	Yes	VIE, FRA, MUN	1/w	2.00
Zurich	Yes	CPH, HAM, FRA, MUC, BRU, LHR	1	2.05

Flight Connections from International Destinations

From	Non Stop	or one stop via one of the airports below	No. of daily flights	Travel time (h)
NORTH AMERICA				
Atlanta		FRA, AMS, LON, PAR, DUS, MAN	24	11.30
Chicago		FRA, ARN, AMS, MUC, LHR, CDG, MAN, CPH	22	9.50
Los Angeles		CDG, LHR, AMS, BRU, CDG, FRA, ZRH	11	13.50
Miami		CDG, FRA, LHR, ZRH, AMS	24	11.50
New York		AMS, ARN, FRA, CDG, CPH, BRU, MAN, BHX, LHR, ZRH, VIE	15	9.05
Seattle		LHR, AMS, CPH	3	11.00
Toronto		LHR, FRA, AMS, MUC, CDG	13	9.35
SOUTH AMERICA				
Buenos Aires		LHR, FRA, CDG	3	16.40
Caracas		CDG, FRA	2	13.25
Saõ Paulo		FRA, ZRH, LHR, CDG, AMS, MIL	14	14.25
ASIA				
Bahrain		AMS, LHR, CDG	5	9.45
Bangkok		PAR, LON, CPH, STO, FRA, MUC, AMS, PAR, VIE, MIL, HEL	27	13.10
Beijing		CDG, AMS, FRA, LHR, HEL, CPH, MUC, VIE	12	11.45
Dubai		AMS, CDG, LHR, ZRH, FRA, MAN, BHX, MUC, DUS, VIE	34	10.05
Hong Kong		ZRH, LHR, AMS, FRA, CDG	16	15.10
Kuala Lumpur		FRA, AMS, VIE, MAN, LON	7	15.45
Mumbai (Bombay)		FRA, AMS, VIE, ZRH, PAR, LON, MIL	14	10.50
Seoul		FRA, CDG, AMS, LHR	8	14.45
Shanghai		CPH, HEL, AMS, FRA, MUC, PAR	13	12.30
Singapore		LHR, AMS, FRA, CPH, CDG, MAN, ZRH, HEL	20	15.30
Teheran	Yes	FRA	1/w	5.40
Tokyo		FRA, AMS, CDG, LHR, ZRH, CPH, VIE, HEL, MUC	19	12.45
AFRICA				
Cairo		CDG, FRA, AMS, ZRH, LHR, VIE	10	6.50
Johannesburg		AMS, FRA, LHR, MUC, CDG, ZRH	14	14.10
Nairobi		AMS, CDG, LHR	6	11.50
OCEANIA				
Sydney		LHR, FRA, VIE	6	23.05

International



Rail, Road or Sea

For Northern European delegates, Göteborg is easily accessible by rail, road or sea.

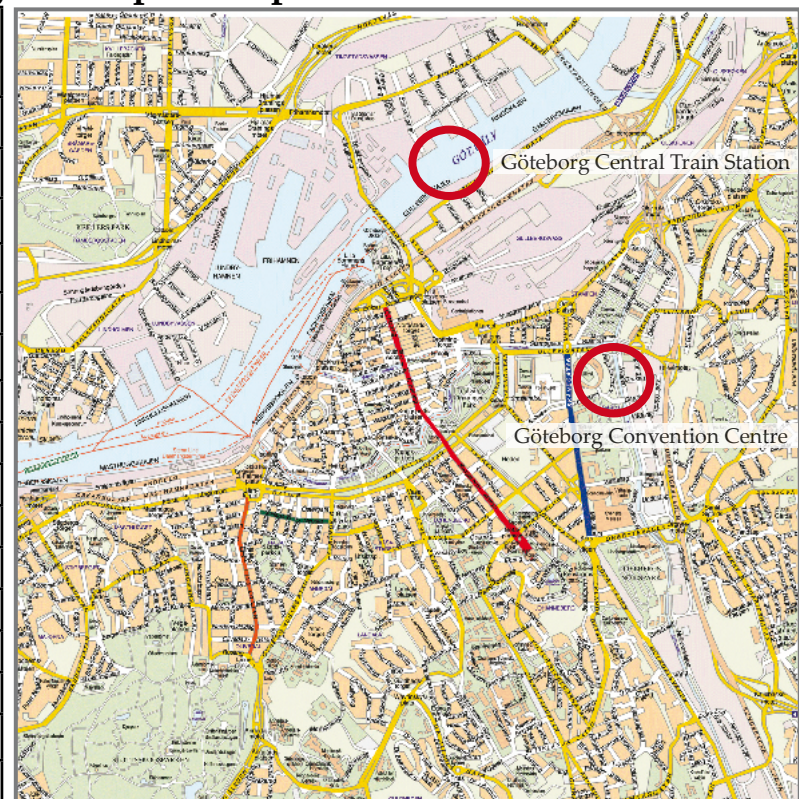
- Rail: Copenhagen, Oslo and Stockholm in three hours.
- Road: The Öresund Link (Sweden - Denmark) enables convenient travelling by car or high-speed train to/from the continent. Excellent motorway network and low traffic density.
- Sea: Frequent ferry services from Denmark, Norway and Germany.

Access Göteborg by Train

Göteborg is easily accessible by train from around Europe, especially from Northern European countries. The city has one main train station; Göteborg Central Train Station, located in the city centre (see the map below).

Train Connections from Major European Capitals

European Capital	Number of Daily Trains
Amsterdam	12
Belgrade	4
Berlin	9
Brussels	5
Budapest	9
Copenhagen	18
London	4
Madrid	5
Moscow	8
Oslo	4
Paris	10
Prague	13
Rome	9
Stockholm	26
Warsaw	8
Vienna	8



TRAVEL WITHIN GÖTEBORG

Traffic Situation in the City

In Göteborg, almost everything is within walking distance. For the IBSA World Games all the hotels and the arenas are within 10 minutes walk! If the competitors would like to go on a day trip after the games, they just take the extensive and reliable public transportation system. There are virtually no traffic jams in Göteborg.

Public Transport Network

Göteborg has a well organised public transport network that consists of three types of vehicles; trams, buses and boats.

Travel Pass

Many different travel cards and tickets are available for a traveller using the local transportation network in Göteborg. The recommended travel card for delegates to travel around in Göteborg during their stay is either the Göteborg Pass or a Day Card.

The Göteborg Pass

The Göteborg Pass entitles the holder to unlimited free public transport, free admission to many sights and attractions and a wide range of discounts for taxi, shopping, eating out, theatres, concerts and other events. Validity: 24 hrs or 48 hrs

The Day Card

With a one day ticket, delegates can travel wherever and as much as they want for 24 hours.





7. CULTURE AND SOCIAL ACTIVITIES



VENUE - OPENING CEREMONY

LISEBERG

The City of Göteborg looks positively upon hosting an opening ceremony for the IBSA World Games. The ceremony could take place in Liseberg, the amusement parc in Göteborg, just across the street from the Swedish exhibition centre.

Liseberg is Scandinavia's largest amusement parc, and there is a possibility to arrange the opening ceremony for 3.000 guests within this parc.



AUDIO DESCRIPTION

MAKING THE CITY ACCESSIBLE

There is a possibility to arrange audio description of some of the sights and culture activities, to make the city accessible for visually impaired. To be able to arrange this with a professional guide, the sights and tours must be selected in advance.



SIGHTS, CULTURE AND ATTRACTIONS

ENJOYING GÖTEBORG

Göteborg has a wide variety of entertainment to choose from as described in this chapter. For further information, please visit: www.goteborg.com. The symbols below indicate (when applicable) how far from the Göteborg Convention centre each attraction is located in minutes.



= walking distance



= public transportation

Göteborg - Scandinavia's Gastronomic Gem

Some of the most famous Swedish chefs are to be found in Göteborg, and it is here one finds the highest number of first-class restaurants per capita in the whole of Scandinavia. Four restaurants in Göteborg have attained Guide Michelin Stars; Basement Restaurant & Bar, Fond Restaurant, Restaurant 28+ and Sjömagasinet.

The main culinary attraction in Göteborg is the local seafood; prawns, lobster and a wide selection of fish, ranked amongst the finest in the world. The city also offers a considerable amount of great restaurants offering cuisine from all over the world, at reasonable prices.



Göteborg Concert Hall

5 - 10

The Göteborg Concert Hall opened in 1935, and was immediately acknowledged as an acoustic gem. The interior walls are built of Canadian maple, the same kind of wood that is used for violins, which is one explanation for the magnificent acoustics. It is recognised as one of the five best concert halls in the world. The Göteborg Symphony Orchestra is Sweden's oldest professional orchestra, founded in 1905, and is also the National Orchestra of Sweden.


Göteborg Opera House

5 - 10 15 - 20

The impressive Göteborg Opera House opened in 1994. Located on the harbour front, the building's modern architecture is influenced by its maritime surroundings. The Göteborg Opera House is the centre for opera, ballet, musicals, operettas and concerts in West Sweden.



Göteborg Museum of Art/Hasselblad PhotoCentre

5 - 10 

The Göteborg Museum of Art have in their possession an outstanding collection of Scandinavian art from the turn of the 19th century, including famous works by Nordic artists such as Carl Larsson, Bruno Liljefors, Anders Zorn, Edvard Munch, Christian Krohg, Vilhelm Hammershøi, Eugène Jansson, Carl Wilhelmson and the entire school of painters from Skagen in Denmark. At the Hasselblad PhotoCentre, one finds exhibitions illustrating a wide range of photographic genres.

Universeum – Science Discovery Centre

0 

Sweden's National Science Discovery Centre is located across the road from the Swedish Exhibition Centre. Universeum presents the natural sciences and technology in a genuinely exotic environment with everything from sharks, deadly attractions and rainforest to high-tech and hands-on experiments.

National Museum of World Culture

0 

Inaugurated in 2004, the National Museum of World Culture is a great new addition to the cluster of meeting facilities, arenas, museums and entertainment surrounding the Swedish Exhibition Centre. The museum is a place for dialogue, where multiple voices can be heard and controversial topics can be raised - an arena for people to feel at home across borders.

Liseberg Amusement Park

0 

Located across the road from the Swedish Exhibition Centre is the Liseberg Amusement Park - a fantastic park, not only for those who enjoy thrilling roller coaster rides. People also visit the park for shows and concerts or for a stroll, admiring the plentiful flower arrangements. Over 3 million people visit Liseberg every year, making it the biggest visitor's attraction in Sweden.

Casino Cosmopol

5 - 10  15 - 20 

Göteborg's International Casino is centrally located in Stora Tullhuset, built in 1865, on the quay close to the opera house.





City Tours

There are a number of city tours in Göteborg. Please find a small selection below:

- **Dramatised City Sightseeing Walk**
A historically dressed guide/actor leads a joyful walk through the oldest parts of Göteborg, the historical quarters around the East India Company buildings and the Crown House.
- **Sightseeing by Old Vintage Tram**
A 1.5-hour tour of the city of Göteborg by an old electric tram.
- **City Sightseeing by Paddan Boats**
On the journey along canals, built during the 17th century, and under twenty bridges, the passengers will see the city from a new perspective.
- **City Harbour Tour**
The tour goes through the Göteborg Harbour, geographically as well as historically, from the East India Company era through the Eriksberg Shipyard era to the modern IT era.

Local Shopping

In the heart of the city everything from fashionable boutiques and department stores, to picturesque markets selling crafts, souvenirs and antiques are located within easy walking distance. It offers an exiting mixture of modern warehouses and specialist shops, pedestrian areas, galleries and arcades. All guaranteed to make shopping in Göteborg a memorable experience. For tips on where to fill the shopping bags, go to the Göteborg City Association website www.gbacity.se





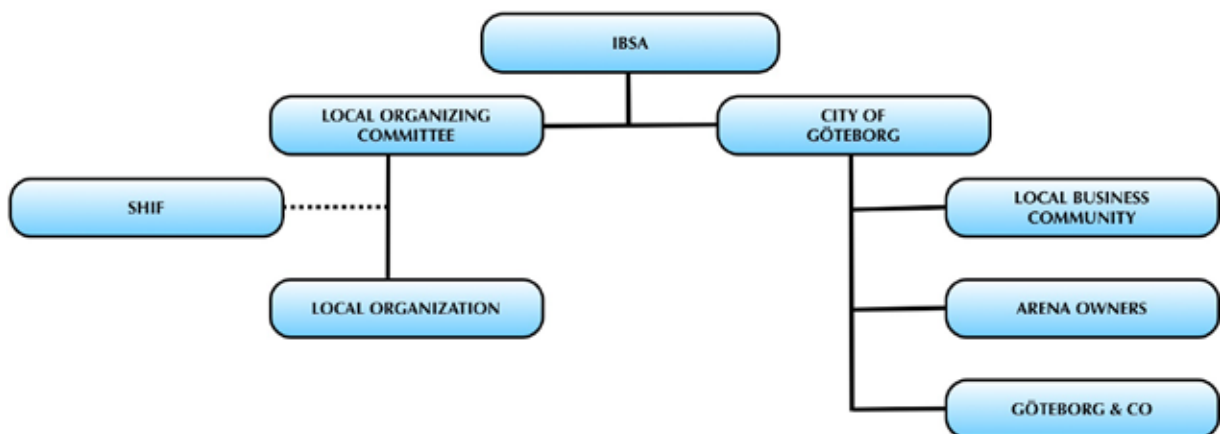
8. APPENDICES





IBSA WORLD GAMES 2011 - GÖTEBORG, SWEDEN

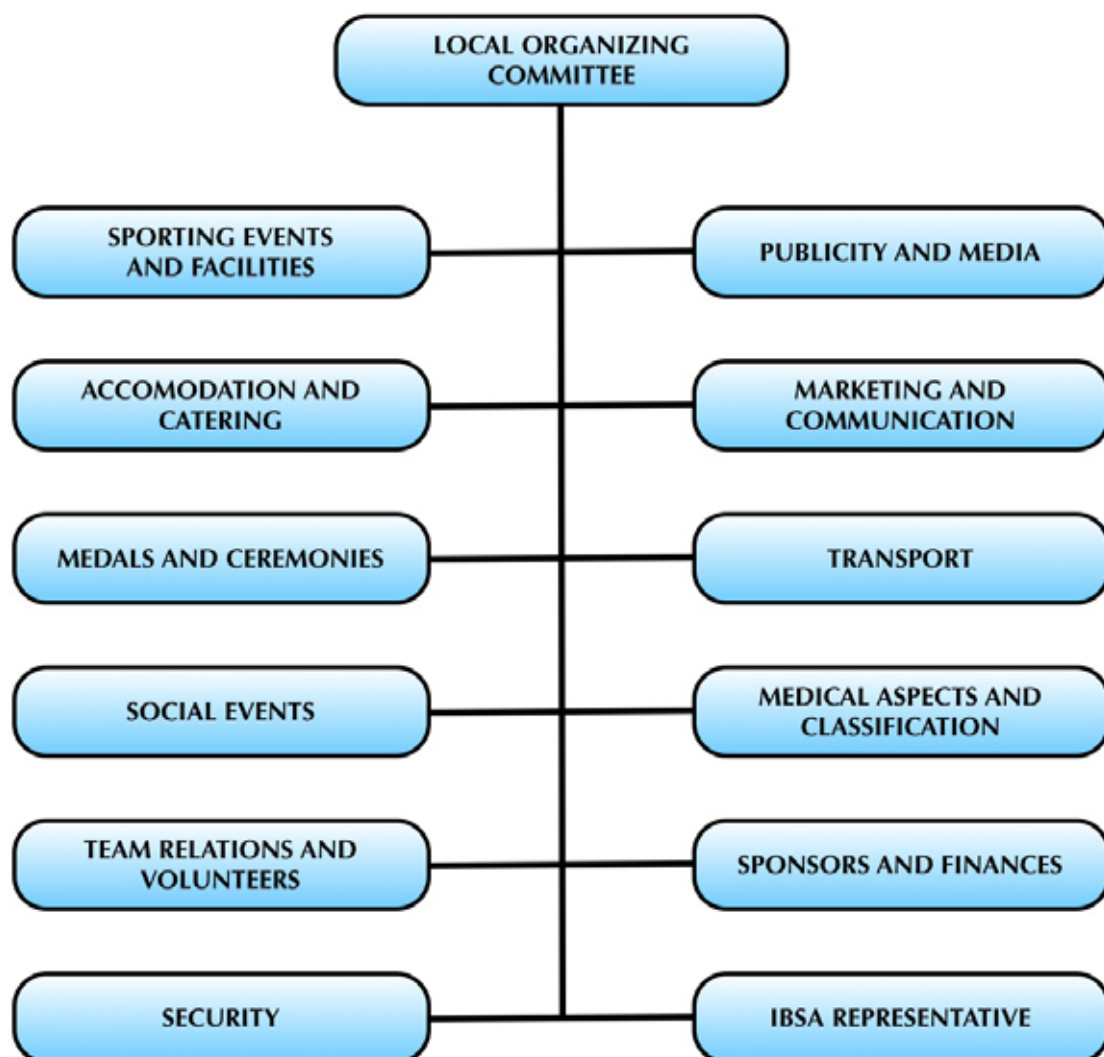
The following figure is a first draft of preliminary organization overall of the IBSA World Games 2011 in Göteborg, Sweden.





IBSA WORLD GAMES 2011 - GÖTEBORG, SWEDEN

The following figure is a first draft of preliminary Local Organizing Committee (LOC) of the IBSA World Games 2011 in Göteborg, Sweden.



SWEDEN

SPACE FOR MINDS

Sweden stretches over 1,500 km from the north to the south and the contrasts between the various parts of the country are dramatic. The seasonal changes are striking with a warm, light and pleasant summer, a colourful autumn and a snowy winter followed by a bright, refreshing and vivid spring.

Sweden offers a rich selection of activities in areas such as nature, culture, sports, design, food and shopping. Swedish cultural policy has been successful in spreading culture to a wide population, with a well developed infrastructure of museums, libraries, theatres, cinemas and other cultural institutions across the country. The past decade in particular has seen the extensive internationalisation of Swedish cultural life, especially in popular culture, with Swedish artists, actors and fashion designers attracting worldwide attention in fields such as music, literature, art, design, fashion and media. Sweden also offers a large and varied selection of interesting restaurants, not just in the major cities but throughout the country, where people interested in gastronomy can enjoy Swedish quality ingredients prepared and served in a modern and innovative way.

A World heritage site is a place, site, environment, or object which provides unique testimony to the history of the earth and of mankind. Thirteen Swedish sites are inscribed on the prestigious World Heritage List and are guaranteed protection and care for all time.





FACTS ABOUT SWEDEN

Population

9 million

Language

Swedish (virtually all Swedes speak English.)

Constitution

Constitutional Monarchy

Prime Minister

Fredrik Reinfeldt

Capital

Stockholm

EU

Sweden has been a member since 1995

Major Industries

IT and electronics (world leading)
Pulp and paper
Environmental techniques
Pharmaceutics

Automotive
Music
Design
Fashion

A Selection of Famous Swedes

Ingmar Bergman

Björn Borg

Arvid Carlsson

Greta Garbo

Dag Hammarskjöld

Carolus Linnaeus (Carl von Linné)

Alfred Nobel

Annika Sörenstam

Raoul Wallenberg

Film Director

Tennis Player

Nobel Prize Winner 2000 in Medicine

Actress

Former Secretary General of UN

Botanist, physician and zoologist

Founder of the Nobel Prize

Golf Champion

Diplomat during WW2

Inventions and Trademarks of Swedish Origin

ABBA, ABSOLUT Vodka, AstraZeneca, Electrolux, Ericsson, IKEA, H&M, The Hasselblad Camera, Nobel Biocare, the Nobel Prize, Pharmacia, Roxette, SAAB, SKF ball bearings, Swedish Match, Tetra Pak, VOLVO etc.

The Swedish Climate

Bearing in mind its northern location, it would be easy to think of Sweden as a country with a harsh climate. However, the heat from the Gulf Stream makes the average temperature in southern Sweden no lower than -2°C in February, rising to $+21.1^{\circ}\text{C}$ in July. On sunny days between May and August temperatures can rise to $+30^{\circ}\text{C}$ in the air and $+24^{\circ}\text{C}$ in the sea and lakes.

Sweden's changing seasons affect nature, daylight, temperature and even to some extent the Swedes themselves. Every season has its perks, but spring and summer in Sweden is a must! From late February/early March the days become longer and brighter.

For further information about Sweden, please visit:
www.visit-sweden.com or www.sweden.se